

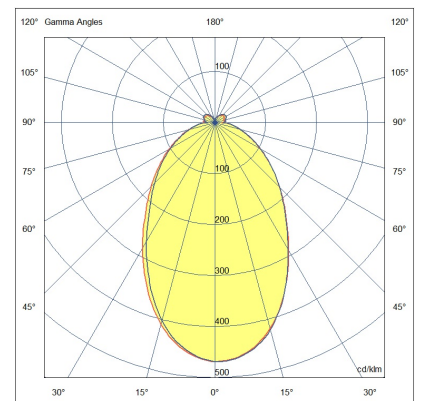
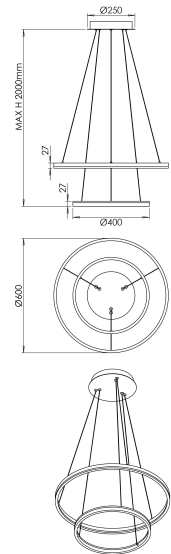


Leo

Circular suspension with double ring with opal diffuser. Thanks to the double ring, one 600 mm and the other 400 mm both with direct light, this suspension guarantees a good level of illuminance. Only available in 3000K version, white or black finish. It has a source emission of about 5320lm. Design and size make Leo an elegant decorative and furnishing element, its performance makes it very versatile. Leo adapts to all environments, even large ones. Perfect for reception (reception, cash desks, hall) and suitable for general lighting of shops, bars, restaurants and meeting rooms, also suitable for the home environment.

Artikelnummer	6993-22-956
Typ	Pendelleuchte
EAN	8019282553533
Zolltarif	94051190
Farbe	Weiß
Material	Aluminium / Opalweiß Diffusor
IP	IP20
IK	07
Isolierklasse	
Operating ambient temperature	0°C +35°C
Artikelmaße	MAX 2000mm Ø600mm - 2.5kg
Verpackungsmaße	85x640x640mm - 3.4kg
	Bestückung 1
Bestückung	LED Eingebaut
LED Merkmale	SMD
Lumen der Lichtquelle	5320 lm
Lumen des Artikels	3700 lm
Farbtemperatur	Warm white 3000K
Diffusor	Diffused beam
Typischer CRI	>80
Energieklasse	
	Elektrische Spezifikationen 1
Eingangsspannung	220 / 240V AC 50/60 Hz
Gesamtabsorbierte Leistung	52W
Treiber	Inklusiv
Leistungsfaktor	>0,9
Steuerungssystem	DALI



CE