

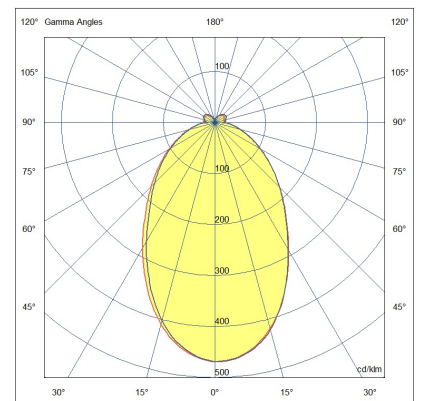
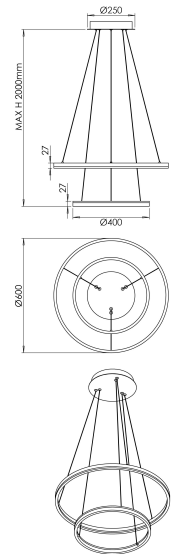


# Leo

Circular suspension with double ring with opal diffuser. Thanks to the double ring, one 600 mm and the other 400 mm both with direct light, this suspension guarantees a good level of illuminance. Only available in 3000K version, white or black finish. It has a source emission of about 5320lm. Design and size make Leo an elegant decorative and furnishing element, its performance makes it very versatile. Leo adapts to all environments, even large ones. Perfect for reception (reception, cash desks, hall) and suitable for general lighting of shops, bars, restaurants and meeting rooms, also suitable for the home environment.

<b>Artikelnummer</b>	<b>6993-22-966</b>
<b>Typ</b>	Pendelleuchte
<b>EAN</b>	8019282553526
<b>Zolltarif</b>	94051190
<b>Farbe</b>	Schwarz
<b>Material</b>	Aluminium / Opalweiß Diffusor
<b>IP</b>	IP20
<b>IK</b>	07
<b>Isolierklasse</b>	
<b>Operating ambient temperature</b>	0°C +35°C
<b>Artikelmaße</b>	MAX 2000mm Ø600mm - 2.5kg
<b>Verpackungsmaße</b>	85x640x640mm - 3.4kg
	<b>Bestückung 1</b>
<b>Bestückung</b>	LED Eingebaut
<b>LED Merkmale</b>	SMD
<b>Lumen der Lichtquelle</b>	5320 lm
<b>Lumen des Artikels</b>	3700 lm
<b>Farbtemperatur</b>	Warm white 3000K
<b>Diffusor</b>	Diffuse strahlend
<b>Typischer CRI</b>	>80
<b>Energieklasse</b>	
	<b>Elektrische Spezifikationen 1</b>
<b>Eingangsspannung</b>	220 / 240V AC 50/60 Hz
<b>Gesamtabsorbierte Leistung</b>	52W
<b>Treiber</b>	Inklusiv
<b>Leistungsfaktor</b>	>0,9
<b>Steuerungssystem</b>	DALI



CE