

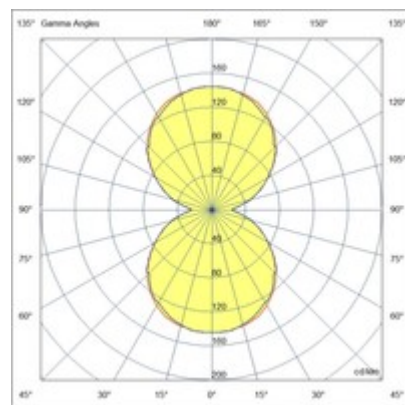
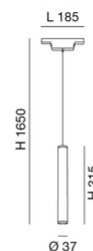


Ermes cylindrical suspension

Suspension LED light which has been designed for use in all profiles of our ERMES system. The 7.5W LED integrated circuit is protected by an opal polycarbonate disc. The classic cylinder shape makes it ideal to be used to illuminate residential environments or wherever a minimalist and modern line is required. Available in two color finishing. On-Off, DALI, Dimmer Push.

Code	6525-22-601
Type	Suspension lamp
Designer	S.T. Fabas Luce
Eancode	8019282555414
Customs tariff	94051190
Color	Black
Material	Aluminum frame
IP	IP20
IK	04
Insulation Class	 CL3
Operating ambient temperature	-20°C + 35°C
Years of warranty	3
Item Dimensions	185xMax 1695mm Ø37mm - 0.30kg
Packaging Dimensions	85x70x335mm - 0.4kg
Light Source 1	
Light source	LED Built-in
LED Characteristics	SMD
Light Source Lumen	720 lm
Item Lumen	540 lm
Color Temperature	Warm white 3000K
Optics	Diffused beam
Minimum CRI	>80
Energy Efficiency Class	
Electrical specifications 1	
Input Voltage	48V DC
Total Absorbed Power	7,5W
Control System	On/Off



CE