

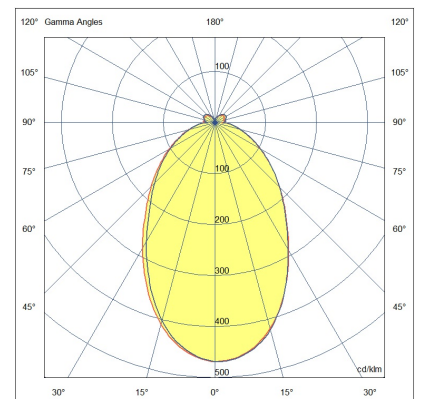
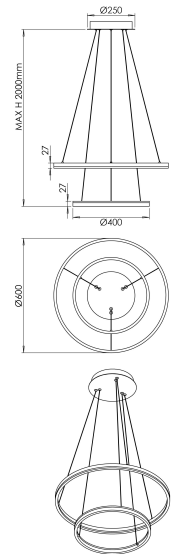


# Leo

Circular suspension with double ring with opal diffuser. Thanks to the double ring, one 600 mm and the other 400 mm both with direct light, this suspension guarantees a good level of illuminance. Only available in 3000K version, white or black finish. It has a source emission of about 5320lm. Design and size make Leo an elegant decorative and furnishing element, its performance makes it very versatile. Leo adapts to all environments, even large ones. Perfect for reception (reception, cash desks, hall) and suitable for general lighting of shops, bars, restaurants and meeting rooms, also suitable for the home environment.

<b>Code</b>	<b>6993-22-964</b>
<b>Type</b>	Suspension lamp
<b>Eancode</b>	8019282558279
<b>Customs tariff</b>	94051190
<b>Color</b>	Black
<b>Material</b>	Aluminum white frame / Opal white diffuser
<b>IP</b>	IP20
<b>IK</b>	07
<b>Insulation Class</b>	
<b>Operating ambient temperature</b>	0°C +35°C
<b>Item Dimensions</b>	MAX 2000mm Ø600mm - 2.5kg
<b>Packaging Dimensions</b>	85x640x640mm - 3.4kg
<b>Light Source 1</b>	
<b>Light source</b>	LED Built-in
<b>LED Characteristics</b>	SMD
<b>Light Source Lumen</b>	5320 lm
<b>Item Lumen</b>	3700 lm
<b>Color Temperature</b>	Warm white 3000K
<b>Optics</b>	Diffused beam
<b>Typical CRI</b>	>80
<b>Energy Efficiency Class</b>	
<b>Electrical specifications 1</b>	
<b>Input Voltage</b>	220 / 240V AC 50/60 Hz
<b>Total Absorbed Power</b>	52W
<b>Driver</b>	Included
<b>Power Factor</b>	>0,9
<b>Control System</b>	On/Off



CE