

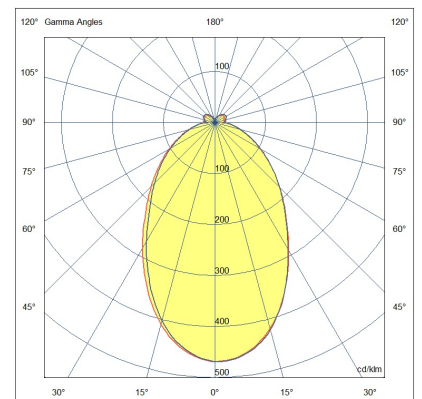
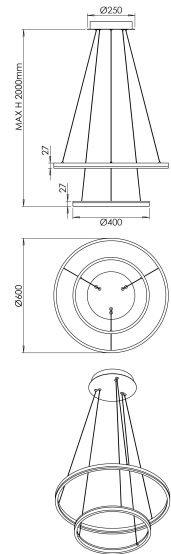


Leo

Circular suspension with double ring with opal diffuser. Thanks to the double ring, one 600 mm and the other 400 mm both with direct light, this suspension guarantees a good level of illuminance. Only available in 3000K version, white or black finish. It has a source emission of about 5320lm. Design and size make Leo an elegant decorative and furnishing element, its performance makes it very versatile. Leo adapts to all environments, even large ones. Perfect for reception (reception, cash desks, hall) and suitable for general lighting of shops, bars, restaurants and meeting rooms, also suitable for the home environment.

Code	6993-22-956
Type	Suspension
Code Barres	8019282553533
Tarif douanier	94051190
Couleur	Blanc
Matériel	Structure en aluminium / Diffuseur blanc opale
IP	IP20
IK	07
Classe d'isolation	
Operating ambient temperature	0°C +35°C
Dimensions de la lampe	MAX 2000mm Ø600mm - 2.5kg
Dimensions de la boîte	85x640x640mm - 3.4kg
Source de lumière 1	
Source	LED Intégré
Caractéristiques des LEDs	SMD
Lumens de la source lumineuse	5320 lm
Lumen de l'article	3700 lm
Température de couleur	Warm white 3000K
Optique	Diffused beam
CRI typique	>80
Classe énergétique	
Spécifications électriques 1	
Tension d'alimentation	220 / 240V AC 50/60 Hz
Puissance totale absorbée	52W
Driver	Inclus
Facteur de puissance	>0,9
Système de contrôle	DALI



CE