

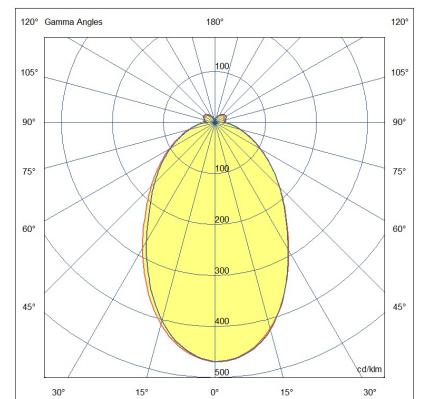
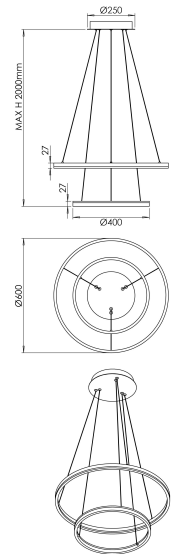


## Leo

Circular suspension with double ring with opal diffuser. Thanks to the double ring, one 600 mm and the other 400 mm both with direct light, this suspension guarantees a good level of illuminance. Only available in 3000K version, white or black finish. It has a source emission of about 5320lm. Design and size make Leo an elegant decorative and furnishing element, its performance makes it very versatile. Leo adapts to all environments, even large ones. Perfect for reception (reception, cash desks, hall) and suitable for general lighting of shops, bars, restaurants and meeting rooms, also suitable for the home environment.

<b>Code</b>	<b>6993-22-964</b>
<b>Type</b>	Suspension
<b>Code Barres</b>	8019282558279
<b>Tarif douanier</b>	94051190
<b>Couleur</b>	Noir
<b>Matériel</b>	Structure en aluminium / Diffuseur blanc opale
<b>IP</b>	IP20
<b>IK</b>	07
<b>Classe d'isolation</b>	
<b>Operating ambient temperature</b>	0°C +35°C
<b>Dimensions de la lampe</b>	MAX 2000mm Ø600mm - 2.5kg
<b>Dimensions de la boîte</b>	85x640x640mm - 3.4kg
<b>Source de lumière 1</b>	
<b>Source</b>	LED Intégré
<b>Caractéristiques des LEDs</b>	SMD
<b>Lumens de la source lumineuse</b>	5320 lm
<b>Lumen de l'article</b>	3700 lm
<b>Température de couleur</b>	Warm white 3000K
<b>Optique</b>	Diffused beam
<b>CRI typique</b>	>80
<b>Classe énergétique</b>	
<b>Spécifications électriques 1</b>	
<b>Tension d'alimentation</b>	220 / 240V AC 50/60 Hz
<b>Puissance totale absorbée</b>	52W
<b>Driver</b>	Inclus
<b>Facteur de puissance</b>	>0,9
<b>Système de contrôle</b>	On/Off



CE